

PRODUCT GUIDE 2009

*Specialists in Display Graphics*

# INTRODUCTION

PRODUCT GUIDE 2009



## Carnival Digital Graphics

Serving the South West and South Wales, Carnival has been built on continued investment in new graphic's technology and the skills of its design and production team.

We are a young company working from our main studio and facility in Bristol, with a satellite studio in Swindon.

Our close working relationship with clients guarantees fast and efficient communications and premium levels of control - essential ingredients for success in this rapidly developing industry.

Presented here is our latest product and price guide..



“ Our aim is to make your marketing budget work harder for you with fresh and innovative design coupled with a fully resourced and managed production facility.

”

BRISTOL  
0117 978 1731

EMAIL  
info@carnivalgraphics.com

INTERNET  
www.carnivalgraphics.com



# POP-UP DISPLAY STANDS

PRODUCT GUIDE 2009

## VALUE SYSTEM

THE MOST VERSATILE SOLUTION FOR YOUR

Press Conferences

Conferences

Seminars

Exhibitions

Launches

Road Shows

Training Days

Promotions



### Set up in minutes



### Optional Extras

#### Lights

Set of 2 200w halogen lights in padded bag

#### Graphics

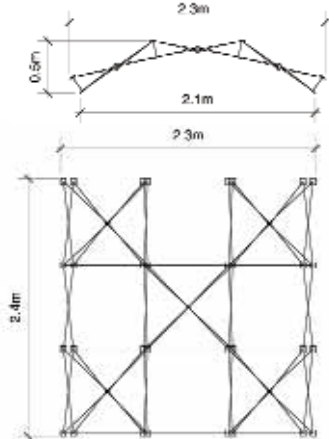
Replacement graphic panels are available

#### Counter Case Graphic

Turn your case in to a counter by adding a graphic  
Graphic size 755mm x 1968mm

#### Shelving Kits

Angled or horizontal shelving for your pop-up

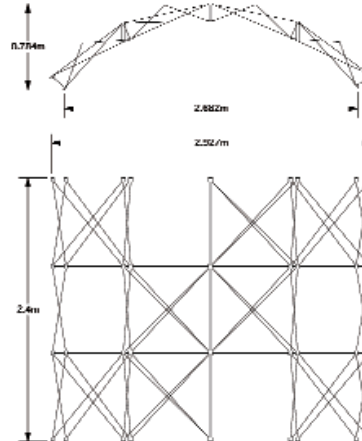


### 3x3 System Includes

- 5 Graphic panels
- 1 System
- 1 Moulded wheeled carry case

#### Single panel sizes:

Inner Curve	748mm x 2340mm
Outer Curve	832mm x 2340mm
Ends	400mm x 2340mm

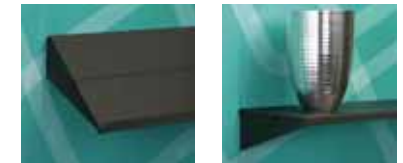


### 4x3 System Includes

- 6 Graphic panels
- 1 System
- 1 Moulded wheeled carry case

#### Single panel sizes:

Inner Curve	748mm x 2340mm
Outer Curve	832mm x 2340mm
Ends	400mm x 2340mm



BRISTOL  
0117 978 1731

EMAIL  
info@carnivalgraphics.com

DESIGN SERVICE - available  
Please call to discuss your requirements



INTERNET  
www.carnivalgraphics.com



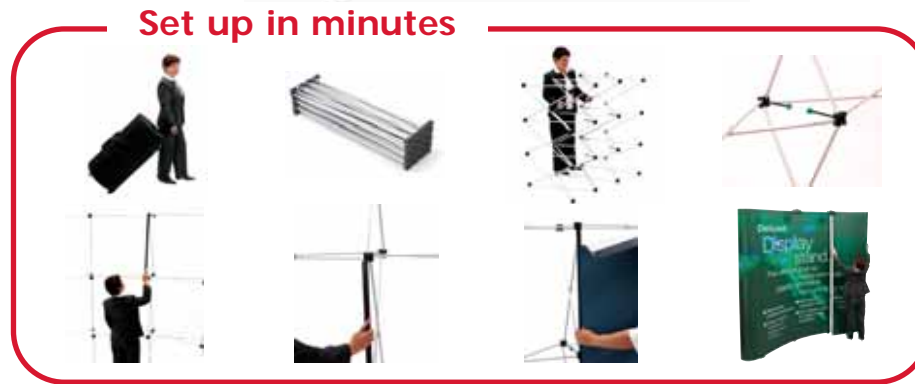
# POP-UP DISPLAY STANDS

PRODUCT GUIDE 2009

## DELUXE SYSTEM

THE MOST VERSATILE SOLUTION FOR YOUR

- Exhibitions
- Conferences
- Seminars
- Press Conferences
- Launches
- Road Shows
- Training Days
- Promotions



### Graphics

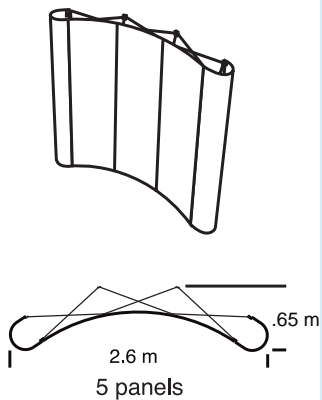
Replacement graphic panels are available.

### 3x3 System Includes

- 5 Graphic panels
- 1 System
- 2 Executive, wheeled carry cases
- 2 Halogen lamps

#### Single panel sizes:

- Inner Curve 673mm x 2235mm
- Outer Curve 808mm x 2235mm
- Ends 673mm x 2235mm

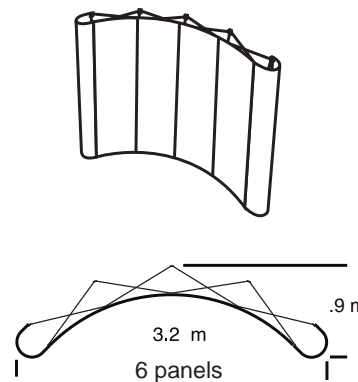


### 4x3 System Includes

- 6 Graphic panels
- 1 System
- 2 Executive, wheeled carry cases
- 2 Halogen lamps

#### Single panel sizes:

- Inner Curve 673mm x 2235mm
- Outer Curve 808mm x 2235mm
- Ends 673mm x 2235mm



BRISTOL  
0117 978 1731

EMAIL  
info@carnivalgraphics.com

DESIGN SERVICE - available  
Please call to discuss your requirements



INTERNET  
www.carnivalgraphics.com



# BANNER DISPLAY STANDS

## PRODUCT GUIDE 2009



### NEW ORLEANS Single

Single Sided Roller Banner:  
Value for money  
Panel size: 845mm x 2000mm



NEW ORLEANS



NOTTING HILL



MARDI GRAS



VENICE 2



SYDNEY

### NEW ORLEANS Double

Double Sided Roller Banner:  
Value for money  
Panel size: 845mm x 1965mm (x2)

### MARDI GRAS

Single Sided Roller Banner Panel  
Deluxe graphic system  
sizes: 850mm x 2000mm

### VENICE 2 1000 Single

Single Sided Roller Banner with  
easy interchangeable graphics  
Panel size: 1000mm x 2150mm

### NEW ORLEANS 1200

Single Sided Roller Banner:  
Value for money  
Panel size: 1200mm x 2000mm

### VENICE 2 850 Single

Single Sided Roller Banner with  
easy interchangeable graphics  
Panel size: 850mm x 2150mm

### VENICE 2 1000 Double

Double Sided Roller Banner with  
easy interchangeable graphics  
Panel size: 1000mm x 2150mm (x2)

### NOTTING HILL

Single Sided Banner Stand:  
Simple lightweight style  
Panel size: various sizes available

### VENICE 2 850 Double

Double Sided Roller Banner with  
easy interchangeable graphics  
Panel size: 850mm x 2150mm (x2)

### SYDNEY

Exterior Banner:Stand  
Min Panel size: 450mm x 1600mm  
Max Panel size: 650mm x 2000mm



### Lights

Lights are available for selected systems

### Carry Case

Each Banner Stand comes complete with a soft carry case.

### Graphics

Replacement graphic panels are available



**ARTWORK SERVICE** - available  
We are also happy to quote for your  
artwork requirements.



BRISTOL  
0117 978 1731

EMAIL  
info@carnivalgraphics.com

INTERNET  
www.carnivalgraphics.com

# EXHIBITION ACCESSORIES

## PRODUCT GUIDE 2009



### Counters

- ♦ Easy assembly flat pack design
- ♦ Choice of black or beech tops
- ♦ Flexible plastic tambour wraps in silver or black
- ♦ Selected units supplied in a moulded transit case



#### Multi Media Counter

- ♦ 1.2m high with 1.0m wide x 0.5m deep top (max)
- ♦ Internal shelf for storage



#### Display Counters

- ♦ 45.5cm dia top
- ♦ Available in 101cm, 77.5cm & 47.5cm high



#### Reception Counter

- ♦ Kidney shaped
- ♦ Internal shelf for storage
- ♦ 1.0m high



#### Graphic Counter

- ♦ Kidney shaped
- ♦ Internal shelf for storage
- ♦ 995 x 1738mm graphic



#### Net Presenter

- ♦ Simple flat pack literature rack
- ♦ Choice of 4 and 8 pocket styles
- ♦ Steel and aluminium frame
- ♦ Includes nylon carry bag



#### Comet Presenter

- ♦ Collapsible flat pack design
- ♦ Four A4 portrait style pockets
- ♦ Stylish chromed frame & foot
- ♦ Supplied with a padded rucksack



#### Stacy Presenter

- ♦ Steel & aluminium frame
- ♦ Collapsible flat pack design
- ♦ Offers double sided displays
- ♦ Supplied in a aluminium flight case

### Literature Presenters

We offer a full range of Literature Presenters in various styles to suit your needs. All are quick and easy to erect and they come with their own stylish carry cases.

BRISTOL  
0117 978 1731

EMAIL  
info@carnivalgraphics.com

INTERNET  
www.carnivalgraphics.com



# DIGITAL DISPLAY GRAPHICS

## PRODUCT GUIDE 2009



We offer the complete range of internal display graphics for Point of Information, Purchase and Sale. Combine our printing facilities with our extensive range of finishing and mounting materials to create the perfect graphic to suit your needs.



### **Novajet print 600 dpi (Inc. Satin Lamination)**

Used for value display graphics and is very good for Backlit prints

### **Epson print 1440 x 720 dpi (Inc. Satin Lamination)**

Used for high quality internal display graphics with the added benefit of UV stability

### **Giclée print 2880 dpi (Inc. Satin Lamination)**

Used for very high quality prints such as Photographic images & Art prints

### **Mounting and Finishing options**

1mm Foam PVC

3mm Foam PVC

5mm Foam PVC

5mm Foamboard

Card

Encapsulate (Matt or Gloss)

Laminate (Matt or Gloss)

Double Velcro

Other substrates are available

### **Standard print sizes**

A4 210 x 297mm

A3 297 x 420mm

A2 420 x 594mm

A1 594 x 841mm

A0 841 x 1189mm



### **QUOTATIONS**

For larger orders please call for a quotation.



**BRISTOL**

0117 978 1731

**EMAIL**

info@carnivalgraphics.com

**INTERNET**

www.carnivalgraphics.com

# EXTERIOR GRAPHICS

## PRODUCT GUIDE 2009



Our Mimaki printer from the market leaders Advanced Image Technology, is the ultimate 'sign system' producing exterior graphics in superb, vibrant, full colour. No other system combines these features with a standard 5 year warranty against fading giving the best value graphics available. We can take our superbly produced graphics and mount them to any substrate that you require to create the perfect signage.



### 5 year Flat White - Adhesive Vinyl

Without laminate

With laminate

### 5 year Transparent - Adhesive Vinyl

Without laminate

With laminate

### 5 year Conformable - Adhesive Vinyl

With laminate

For a full list of prices, including substrates and mount please give us a call.



Installation services are available



### Perforated - Adhesive Vinyl With laminate

One way vision film. Perforations allow those behind the graphic to see out, those in front only see the image.

### Floor Graphics With laminate

Suitable for most floors: sealed concrete, marble, terrazzo, ceramic tiles, finished wood.

### Reflective With laminate

This reflective film is suitable for all external and vehicle applications.

ARTWORK SERVICE - available

We are also happy to quote for your artwork requirements.

BRISTOL

0117 978 1731

EMAIL

info@carnivalgraphics.com

INTERNET

www.carnivalgraphics.com



# BILLBOARDS

## PRODUCT GUIDE 2009



Carnival produce high quality large format digital prints for billboards and bus shelter advertising. Printed directly onto blue backed, wet strength paper direct from disk by our Mimaki Digital Printer.

### Billboard sizes

4 sheet poster	40" x 60"	6 sheet poster	47" x 71"
12 sheet poster	10' x 5'	16 sheet poster	6'8" x 10'
48 sheet poster	20' x 10'	96 sheet poster	40' x 10'

**BRISTOL**  
0117 978 1731

**EMAIL**  
info@carnivalgraphics.com

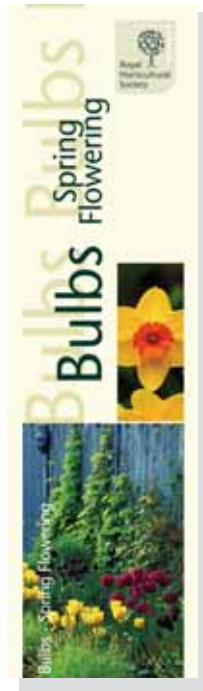
**INTERNET**  
www.carnivalgraphics.com

**ARTWORK SERVICE** - available  
We are also happy to quote for your artwork requirements.




# EXTERIOR BANNERS

## PRODUCT GUIDE 2009



**FULL COLOUR WEATHERPROOF BANNERS**  
 COMPLETE WITH EDGING AND EYELETS  
 <<< HIGH QUALITY DIGITAL PRINTING >>>



### THE MOST VERSATILE SOLUTION FOR YOUR

- Events
- Special Offers
- Point of Sale
- Advertising
- Point of Information
- Road Shows
- Site Hoardings
- Promotions

### Finishing

All our banners are printed digitally onto high grade PVC or mesh. The edges are then stitched or welded and finished with reinforced eyelets, for easy erection.

Ideal for outside events or less formal advertising, our strong and durable banners will last even in the most adverse conditions. Hang them from roofs, buildings and walls to maximise the message.



Metric	Imperial
609mm x 1828mm	2' x 6'
914mm x 1828mm	3' x 6'
1220mm x 1828mm	4' x 6'
1220mm x 2440mm	4' x 8'
1220mm x 3657mm	4' x 12'

For custom sizes please phone for a quotation.

BRISTOL  
0117 978 1731

EMAIL  
info@carnivalgraphics.com

INTERNET  
www.carnivalgraphics.com

**ARTWORK SERVICE** - available  
 We are also happy to quote for your artwork requirements.



# VEHICLE GRAPHICS

## PRODUCT GUIDE 2009



Your Fleet should promote your Company wherever they go day and night, 365 days a year. What do you do, make or supply?

**Show everyone!**

New technology now allows for full colour, photographic images to be incorporated into Vehicle Liveries with an outstanding **5 year colour warranty**, using our Mimaki Printer and guaranteed materials from 3M, Avery and Spandex. Carnival delivers a full design and production package to suit your requirements whether you run just one van or a large fleet.



Flat Vinyl with Laminate  
Conformable Vinyl with Laminate  
Application

(Suitable for Flat Sided Vehicles)  
(Suitable for Contoured Vehicles)  
Charged per man hour

*we can offer you a price discount for more than one vehicle - let us quote you.*



BRISTOL  
0117 978 1731

EMAIL  
info@carnivalgraphics.com

**ARTWORK SERVICE** - available  
We are also happy to quote for your  
artwork requirements.



INTERNET  
www.carnivalgraphics.com



# CUT VINYL GRAPHICS

## PRODUCT GUIDE 2009

As a further support to our full colour, printed vinyl we have a high-end Mimaki vinyl cutter allowing us to produce one-piece graphics up to 1600mm wide.

This allows us to fulfil 100% of our client's requirements and forms a superb facility for our existing exterior sign and graphics business.

We are able to produce high quality cut vinyl on a range of different vinyls from frosted glass to striking, coloured vinyls.



BRISTOL  
0117 978 1731

EMAIL  
info@carnivalgraphics.com

INTERNET  
www.carnivalgraphics.com



# BUSES & TAXIS

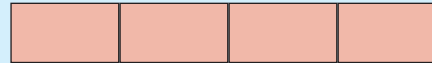
## PRODUCT GUIDE 2009



### Graphics Available

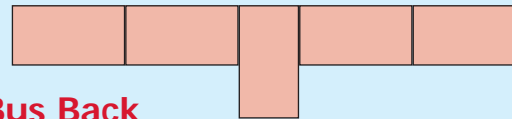
#### Bus Superside

Superside 635mm x 6085mm



#### Bus T-side

T-side 1777mm x 7250mm



#### Bus Back

Backs 2600mm x 4000mm

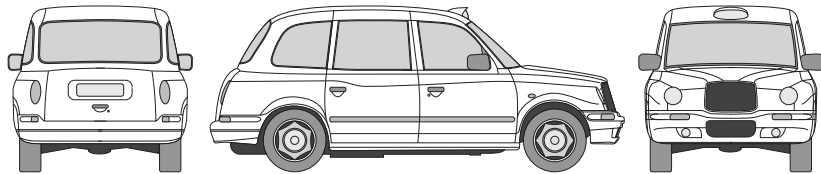
#### Taxi Full Wraps

#### Taxi Supersides

#### Taxi Doors

#### Taxi Rear Window

#### Taxi Side Windows



**ARTWORK SERVICE** - available  
We are also happy to quote for your  
artwork requirements.



BRISTOL  
0117 978 1731

EMAIL  
info@carnivalgraphics.com

INTERNET  
www.carnivalgraphics.com

# PROFESSIONAL APPLICATION

PRODUCT GUIDE 2009



With over 10 years experience, our **fully trained team** of graphics fitters, are fully qualified to undertake your application requirements. We can either travel to your workplace or alternatively at our premises in Bristol, which can accommodate an artic trailer inside with its roll-in roll-out facility. A good sound application is always helped by the correct working environment.



BRISTOL  
0117 978 1731

EMAIL  
info@carnivalgraphics.com

INTERNET  
www.carnivalgraphics.com

# PRINT & CUT LABELS & STICKERS

PRODUCT GUIDE 2009



Using the latest technology in our cutter range, we are able to take our high quality vinyl prints and accurately cut them to shape, making superb quality labels and stickers. We are able to cut very small images for brochures right up to large images for vehicles.



Labels & Stickers can be supplied as individuals or on sheets



BRISTOL  
0117 978 1731

EMAIL  
info@carnivalgraphics.com

INTERNET  
www.carnivalgraphics.com



# CANVAS ART

## PRODUCT GUIDE 2009



All our pieces are produced on a high quality, 425 gram, artist canvas and sealed with a satin lacquer. Our inks are UV stable to guarantee that the work will last a lifetime. The canvas is stretched onto a hand-made, 1.5 inch thick, kiln-dried frame and comes ready to hang. *Photo restoration or manipulation available.*

Whether it is your child's first photo, a favourite holiday moment or a picture of your pets, we can transform them into a lovely piece of art to hang on your wall or give away as gifts.



### Sizes

16" x 12"	(406 x 305mm)
16" x 16"	(406 x 406mm)
20" x 16"	(508 x 406mm)
24" x 20"	(610 x 508mm)
40" x 30"	(1016 x 762mm)
40" x 40"	(1016 x 1016mm)
50" x 35"	(1270 x 889mm)

Custom sizes are available



BRISTOL  
0117 978 1731

EMAIL  
[info@carnivalgraphics.com](mailto:info@carnivalgraphics.com)

INTERNET  
[www.carnivalgraphics.com](http://www.carnivalgraphics.com)

# DIGITAL PHOTOGRAPHY & RETOUCH

## PRODUCT GUIDE 2009



We have our own in-house, fully equipped digital studio. We can photograph everything from a component the size of a pinhead to a 'ten ton truck' inside, in the warm and dry. We can also provide location photography to suit your needs. Please phone for a quote.



As the perfect complement to our photography, we also offer you our professional retouch, manipulation and colour correction skills to enhance your images.



Before



After



BRISTOL  
0117 978 1731

EMAIL  
info@carnivalgraphics.com

INTERNET  
www.carnivalgraphics.com



# SCANNING & DIGITAL IMAGING

PRODUCT GUIDE 2009



## 35mm Standard Resolution Scanning

1-50 Images  
51-250 Images  
251-500 Images  
501-1000 Images  
1000+

## 35mm Uncut Film Standard Resolution

24 Exp  
36 Exp

## 35mm Cut Strips Standard Resolution

24 Exp  
36 Exp

## 120 / 5x4 High Resolution Scanning

1-50 Images  
51-100 Images  
101-250  
251-500 Images  
501-1000 Images  
1000+

## 120 / 5x4 Super High Resolution Scanning

1-20 Images  
21+ Images

## Flatbed Artwork High Resolution

1-5 Artworks  
6-25 Artworks  
26-100 Artworks  
100+

## Resolution

Standard resolution (SR)  
= 18meg RGB

High resolution (HR)  
= 72meg RGB

Super high resolution (SHR)  
= 144meg RGB

## Digital Film Imaging (Agfa Forte+)

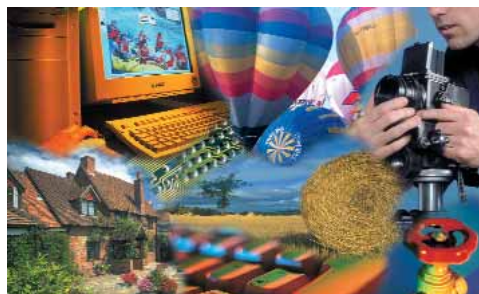
35mm from file supplied  
5x4 Neg or Pos

## Photo CD & CD Rom Discs

Standard CD Rom Disc  
Master Disc (Holds 100 35mm SR images)  
Portfolio Disc (Holds 100 SR images or 45 HR images)

## Studio & Location Photography

Pack Shots  
Standard Day Rate  
Half Day



BRISTOL  
0117 978 1731

EMAIL  
info@carnivalgraphics.com

INTERNET  
www.carnivalgraphics.com



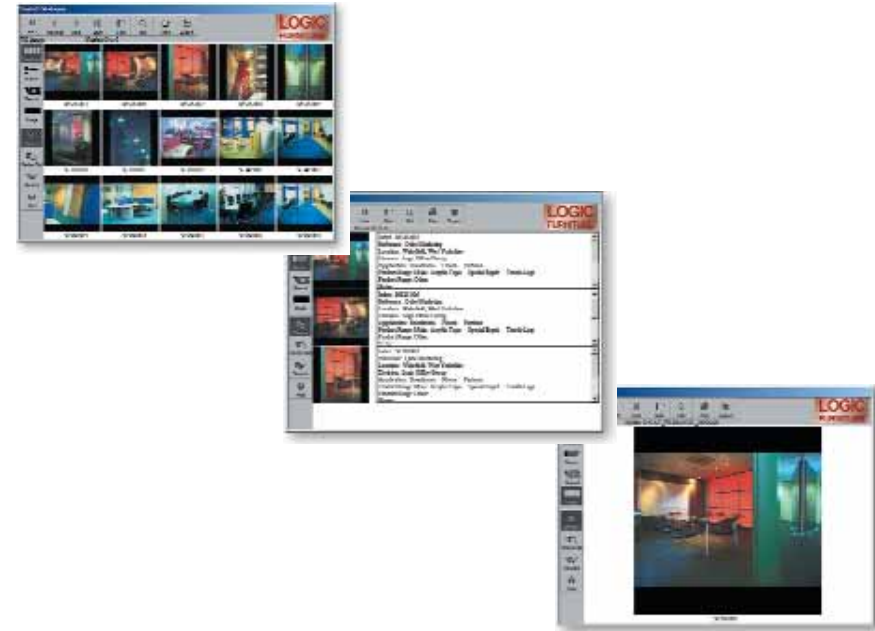
# IMAGE DATABASES

## PRODUCT GUIDE 2009



### Databases

Many companies are beginning to realise that their visual assets are valuable and essential for the efficient running of their marketing efforts. Cataloguing publishing and distributing photo and graphic images on CD, DVD or via the Web not only saves time and money but also allows you to easily control usage. We have several solutions to suit any circumstance or image library.



BRISTOL  
0117 978 1731

EMAIL  
info@carnivalgraphics.com

INTERNET  
www.carnivalgraphics.com



# FILE PREPARATION GUIDE

PRODUCT GUIDE 2009



## File preparation

When you supply your digital files to us please include a printed proof of how you expect the finished work to look. If you can't print one off, we are happy to supply a proof so that you can inspect it and make any adjustments, prior to final printing. Usually an A4 proof is sufficient to give our technicians an indication of the final look.

If you need us to match to a specific colour then please let us know and supply us with a PMS number or a colour sample. We will try and get as close as possible to the colour within the boundaries of the CMYK process.

We work with a full range of the latest software packages including:

Quark    Photoshop    Illustrator    Freehand    InDesign    CorelDraw    Powerpoint  
and many more.

If you have work on another format please call us and we are happy to advise you.

**BRISTOL**  
0117 978 1731

**EMAIL**  
[info@carnivalgraphics.com](mailto:info@carnivalgraphics.com)

**INTERNET**  
[www.carnivalgraphics.com](http://www.carnivalgraphics.com)



# HOW TO FIND US

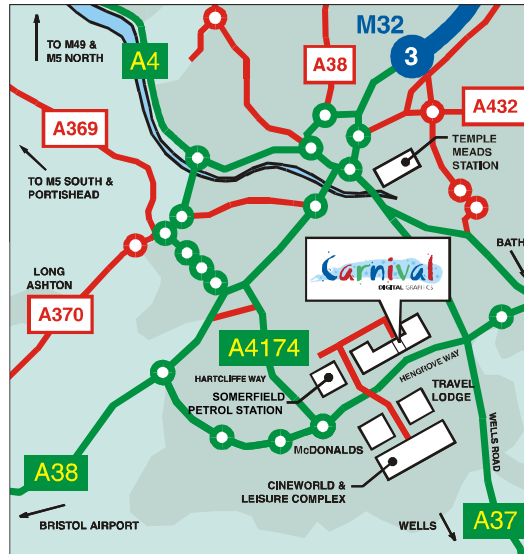
## PRODUCT GUIDE 2009



Carnival Digital Graphics  
 Unit 9 Enterprise Trade Centre  
 Roman Farm Road  
 Hengrove  
 Bristol  
 BS4 1UN

Tel: 0117 978 1731

Fax: 0117 978 1729



### From M4 East or West

M4 Junction 19 take M32 to Bristol  
 At the end of the M32 follow signs for Wells & A37  
 Go through an underpass & 3 sets of lights  
 Get in lane marked A37  
 Pass Temple Meads Station on the left  
 1/4 mile road splits, bear right to Wells & A37  
 1 mile at bottom of hill traffic lights turn right for Ring Road  
 1 mile large white buildings on right  
 Turn right at traffic lights by somerfield, at 50 yds turn right  
 At 100 yds turn right. Arrive.

### From M5 North or South

M5 Junction 18 take A4 to Bristol  
 After about 5 miles pass under Suspension Bridge  
 Follow signs for Taunton, over river, 2nd exit  
 Pass Mercedes showroom on the left  
 At lights follow road to bath for 1 mile  
 Just after B&Q on the right take 1st exit at the roundabout  
 1/4 mile, at somerfield garage turn left, at 50 yds turn right  
 At 100 yds turn right. Arrive.

### From Bath A4

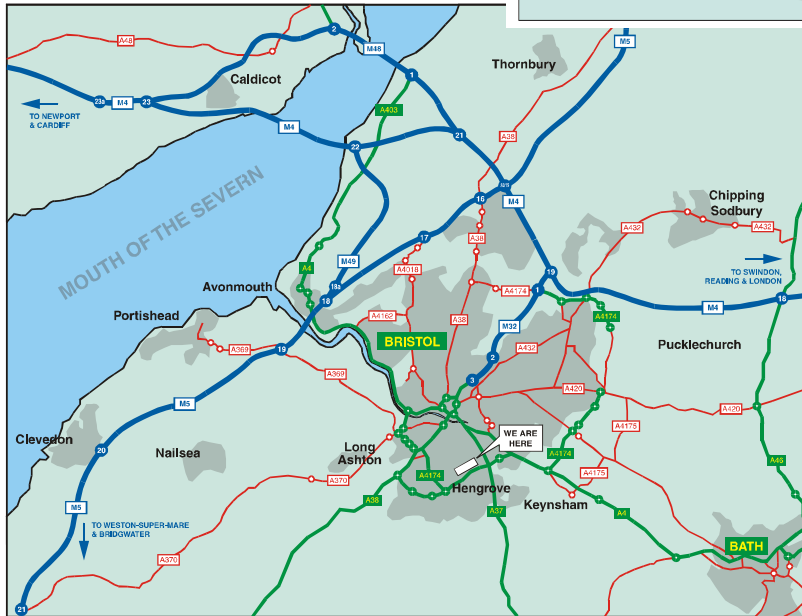
1/2 mile past the Park & Ride at traffic lights, follow  
 sign for Ring Road A4174  
 At 2nd set of lights straight over on Ring Road  
 1 mile large white buildings on right  
 Turn right at traffic lights by somerfield, at 50 yds turn right  
 At 100 yds turn right. Arrive.

### From Wells A37

On A37 through Whitchurch  
 Happy Landings pub on left, at next traffic lights  
 Turn left for Ring Road  
 1 mile large white buildings on right  
 Turn right at traffic lights by somerfield, at 50 yds turn right  
 At 100 yds turn right. Arrive.

### From Bristol Airport A38

From Airport approx 5 miles to outskirts of Bristol  
 At King's Head roundabout turn right to Hartcliffe  
 1 mile at T junction turn right  
 100 yds turn left at mini roundabout (1st exit) 1 mile  
 At roundabout straight over (2nd exit) 1 mile  
 At roundabout straight over (2nd exit to Bath) 1/4 mile  
 At somerfield garage turn left, at 50 yds turn right  
 At 100 yds turn right. Arrive.



**BRISTOL**  
 0117 978 1731

**EMAIL**  
[info@carnivalgraphics.com](mailto:info@carnivalgraphics.com)

**INTERNET**  
[www.carnivalgraphics.com](http://www.carnivalgraphics.com)



# CLIENTS

## PRODUCT GUIDE 2009



Our creative and production team have between them, worked for major blue chip clients throughout their careers. Since they have been with us they have had the opportunity to work with the following companies:

Aardman Animations	Ignition Strategic Design
Alderley Holdings	St James's Place
BBC Wildlife	McArthur Group
BMW Group	M.O.D.
Bristol Tourism	Plymouth City Museum
Campden & Chorleywood	Ringway Signs
Cornwall Wildlife Trust	South West Cancer Research
Craft In The Bay	The Somerset Toiletry Company
GE Healthcare	Taylormade
Herman Miller	University of Bristol
Hire-Rite	Weir Starchen & Henshaw
Hilton Hotels	Wyke Farms

“ Our client’s needs are paramount; our team is our greatest asset; and our innovation, investment and technology give us our competitive edge. ”

**Carnival Digital Graphics**  
Unit 9 Enterprise Trade Centre  
Roman Farm Road  
Hengrove  
Bristol  
BS4 1UN

Tel: 0117 978 1731

Fax: 0117 978 1729

Email: [info@carinvalgraphics.com](mailto:info@carinvalgraphics.com)

Web: [www.carnivalgraphics.com](http://www.carnivalgraphics.com)

